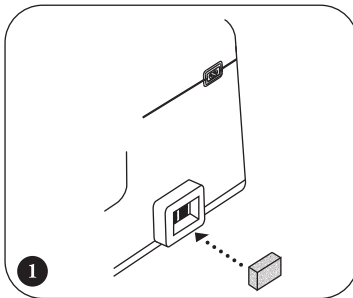


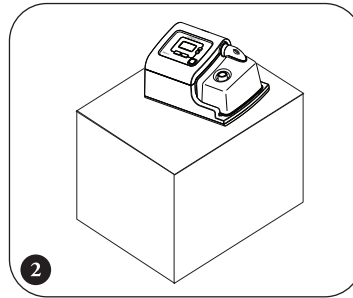
RESPIRONICS®

## SleepEasy® Quickstart Guide

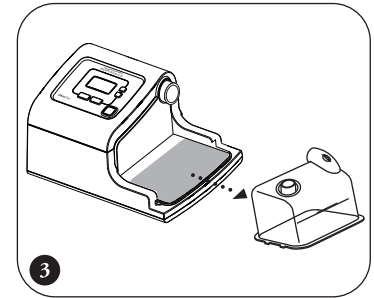
Complete the following steps to set up your SleepEasy device with integrated humidifier.



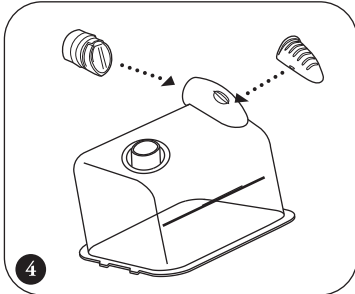
**1** Insert the gray foam filter into the filter area.



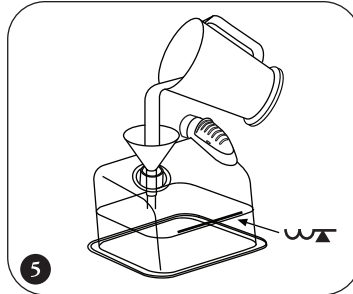
**2** Place the device on a firm flat surface within easy reach of where you will use it.



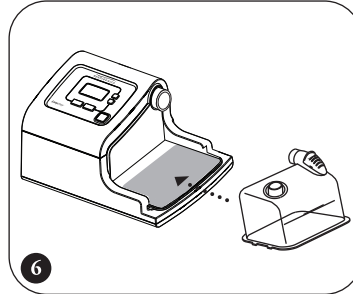
**3** Slide the water chamber out from the side of the unit.



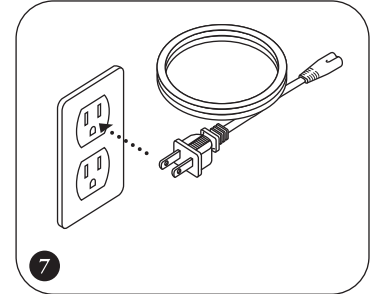
**4** Insert the soft valve into the air outlet port, and clip the protective cover on top of the water chamber.



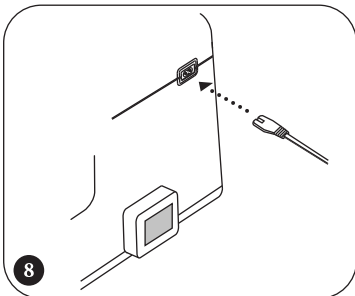
**5** Fill the water chamber to fill line with distilled water using the funnel.



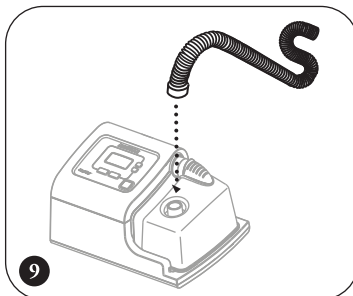
**6** Slide the water chamber into place on the side of the unit.



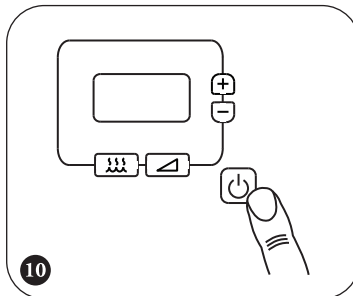
**7** Plug the pronged end of the AC power cord into an electrical outlet.



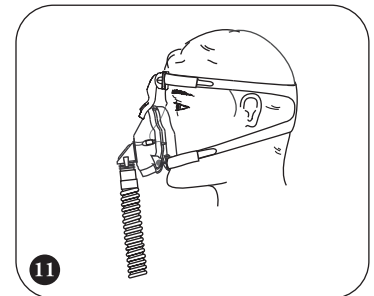
**8** Plug the other end of the power cord into the inlet on the back of the device.



**9** Connect the flexible tubing to the outlet port on the water chamber.



**10** Press the START/STOP button to turn on the airflow.



**11** Put on the mask assembly when the air starts to flow.

RESPIRONICS®

1001 Murry Ridge Lane  
Murrysville, PA 15668  
www.respironics.com



**CAUTION:** U.S. federal law restricts this device to sale by or on the order of a physician.

1047196  
JR 9/5/07